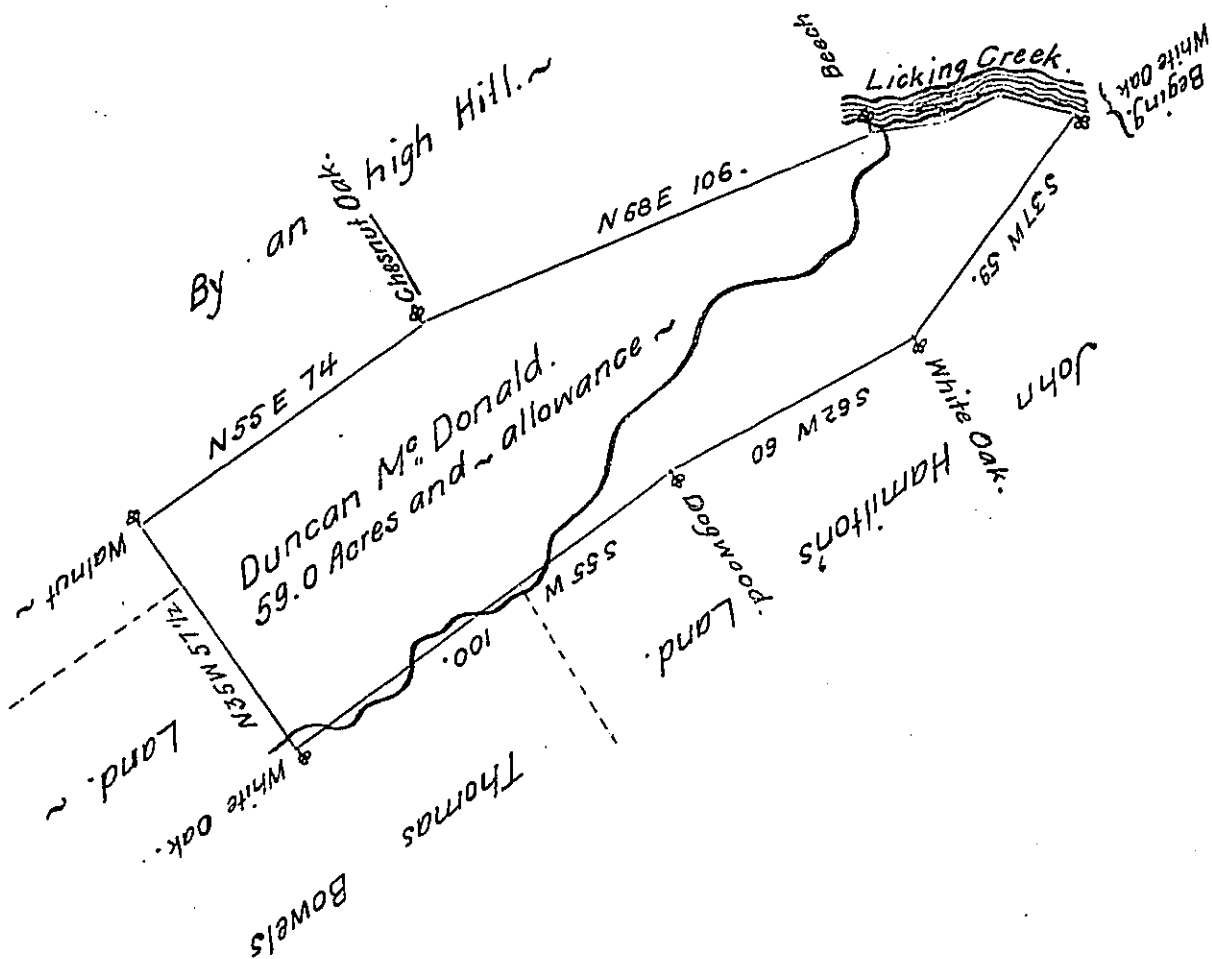


Courses and Dist^s
Down Licking Creek.

N 81 E 16 ~
N 65 E 12 ~
S 76 E 18 ~
~ 46 ~



The Draught of a Tract of Land Called _____ situate in Tuscarora Valey
Cumberland County containing Fifty Nine Acres and an Allow. proportionate to Six acres
of Cent: for Roads Survey'd the 27th day of November Anno Dom: 1767. In Pursuance of an
order of Survey to Duncan Mc Donald Bearing Date at Philad^a the 31st day of October
Anno Dom: 1766 and numbered 1761. ~
To John Lukens Esq^r. S.G. } W^m Maclay D.S.
of Pennsylvania. ~ }

IN TESTIMONY that the above is a copy of the original remaining on file in
the Department of Internal Affairs of Pennsylvania, made
conformably to an Act of Assembly approved the 16th day of
February, 1833, I have hereunto set my Hand and caused
the Seal of said Department to be affixed at Harrisburg,
this thirteenth day of August 1908

Nancy Howard
Secretary of Internal Affairs.